

如> 肥薩線

作詞 杉下潤二

作曲 岸足るおし

Handwritten musical score for the first system. It consists of three staves: a single treble clef staff at the top, and a grand staff (treble and bass clefs) below. The music is in common time (C). The first staff contains a melodic line with some rests. The grand staff contains piano accompaniment with chords and moving lines in both hands.

Handwritten musical score for the second system. It consists of three staves: a single treble clef staff at the top, and a grand staff (treble and bass clefs) below. The music continues from the first system. The first staff shows a melodic line with eighth and sixteenth notes. The grand staff provides accompaniment with chords and rhythmic patterns.

Handwritten musical score for the third system. It consists of three staves: a single treble clef staff at the top, and a grand staff (treble and bass clefs) below. The music continues. The first staff features a melodic line with a dynamic marking 'v' (accent) at the end. The grand staff accompaniment includes chords and moving lines.

Handwritten musical score for the fourth system. It consists of three staves: a single treble clef staff at the top, and a grand staff (treble and bass clefs) below. The music concludes with a melodic line in the first staff and accompaniment in the grand staff. A dynamic marking 'p' (piano) is visible in the first staff of this system.

Handwritten musical score, first system. It features a vocal line at the top and a piano accompaniment below. The piano part includes a first ending marked "1." and a second ending marked "2." with a repeat sign. The notation includes various note values, rests, and dynamic markings.

Handwritten musical score, second system. This system continues the piano accompaniment from the first system. It shows a continuation of the melodic and harmonic lines in both the right and left hands.

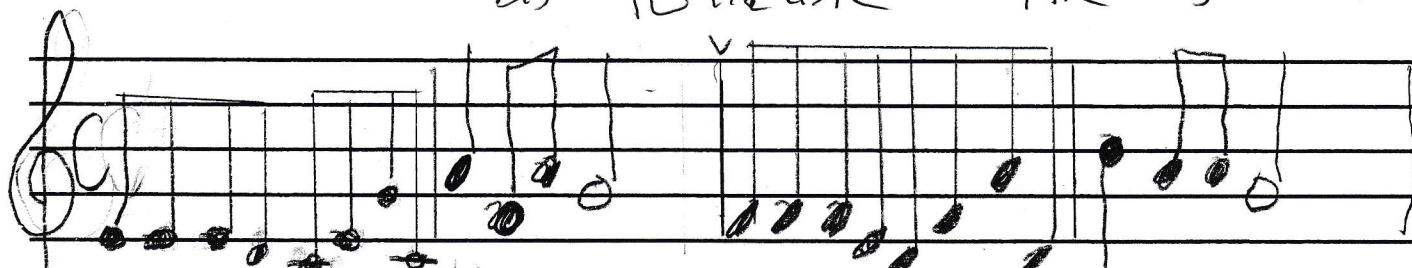
D.S

Handwritten musical score, third system. This system begins with a treble clef and a common time signature. It contains piano accompaniment with a dynamic marking of *mf* and includes some handwritten notes below the staff, possibly indicating fingerings or performance instructions.

Handwritten musical score, fourth system. This system shows the continuation of the piano accompaniment, with some notes in the right hand appearing to be marked with a fermata or similar notation.

お肥薩線

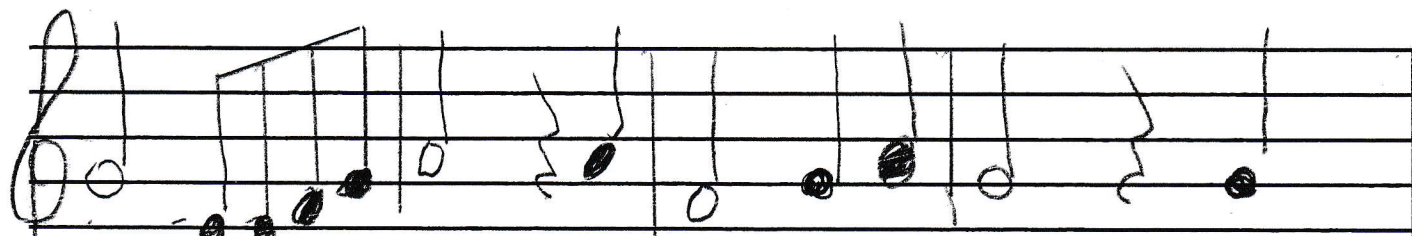
月足さかり



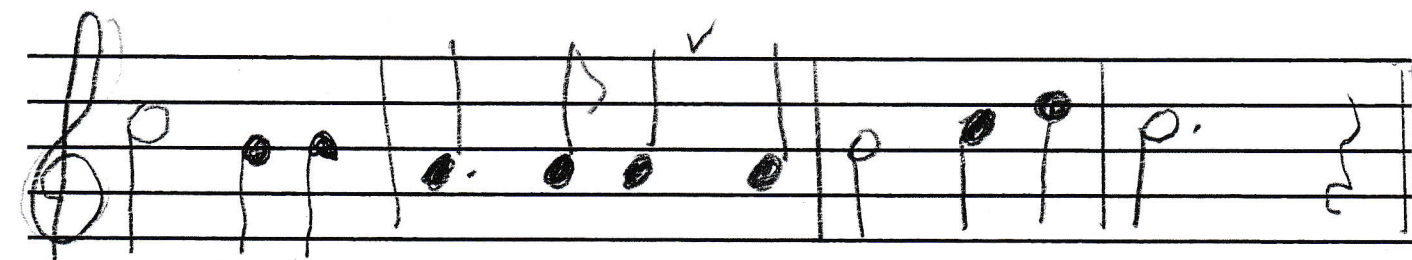
1 くまがわわたりにたこえて - とどろおどろわかいあゆ
 2 くまがわわたりにあまこえて - くまのせはやくだりあゆ
 3 くまがわわたりにソレルと - おくまはまたもとソレルと
 4 くまがわわたりにソレルとあまこえて - まわりまわってまたソレルと



かどろカワセミ かおあげて - おはようさん と いって た あ
 かどろヤマセミ かおあげて - こんにちは と いって た あ
 かどろさんげい まだらかに こころふる と くまのせ と あ
 せりしはせんざん めにみつる はるかにと おく さくらじま あ



あ ひさつせん か わ せ み こ う
 あ ひさつせん や ま せ み こ う
 あ ひさつせん う と よ し こ う
 あ ひさつせん い さ ぶ ろ う



つ ま た は し る ひ さ つ せ ん

イントロ → 1番 → 2番 → 間奏 → 3番 → 4番 → エンディング